



FIELDHOUSE

T: +44 (0)20 7013 0770
F: +44 (0)20 7731 1964
PROPERTY@FHRES.CO.UK
FHRES.CO.UK



56 Broomwood Road, Battersea, London, SW11 6JF

WELL PRESENTED THREE BEDROOM FLAT located off the ever popular Northcote Road within easy reach of local Restaurants, Bars, Shops and Public Transport. Ideal for three professional sharers.

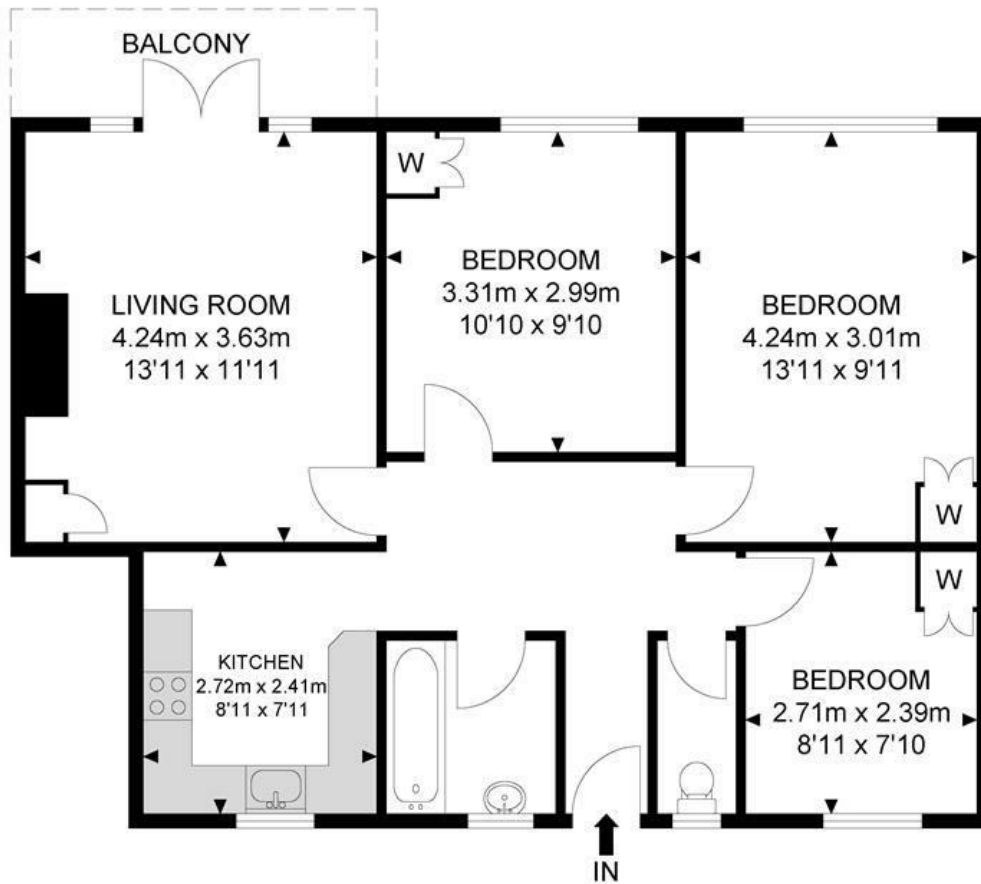
The property comprises entrance hallway leading to lounge with small balcony, fitted kitchen with a range of base and eye level units, three bedrooms, bathroom with shower over bath and separate toilet. The property also benefits from laminate and vinyl flooring throughout, gas central heating and UPVC windows. Available Immediately!

Minimum Length of Tenancy: 12 Months
Council Tax: Wandsworth Borough Council
Council Tax Band: D

- GROUND FLOOR FLAT
- THREE DOUBLE BEDROOMS
- SHOWER OVER BATH
- FITTED KITCHEN
- UPVC WINDOWS
- AVAILABLE IMMEDIATELY

£2,250 PCM*

Broomwood Road



Ground Floor



APPROX. GROSS INTERNAL FLOOR AREA 709.34 SQ FT / 65.90 SQM
APPROX. GROSS EXTERNAL FLOOR AREA 44.13 SQ FT / 4.10 SQM

Whilst every attempt has been made to ensure the accuracy of the floor plan contained here, measurements of doors, windows, rooms and any other items are approximated and no responsibility is taken for any error, omission or mis-statement. This plan is for illustrative purposes only and should be used as such by any prospective purchaser. The service, system and appliances shown have not been tested and no guarantee as to their operability or efficiency can be given.

© SpacePhoto

Photography and Floor Plan

Energy Efficiency Rating		
	Current	Potential
Very energy efficient - lower running costs		
(92 plus) A		
(81-91) B		
(69-80) C		
(55-68) D		
(39-54) E		
(21-38) F		
(1-20) G		
Not energy efficient - higher running costs		
England & Wales	EU Directive 2002/91/EC	

Environmental Impact (CO ₂) Rating		
	Current	Potential
Very environmentally friendly - lower CO ₂ emissions		
(92 plus) A		
(81-91) B		
(69-80) C		
(55-68) D		
(39-54) E		
(21-38) F		
(1-20) G		
Not environmentally friendly - higher CO ₂ emissions		
England & Wales	EU Directive 2002/91/EC	



FIELDHOUSE RESIDENTIAL LIMITED

Registered Address: 94 Wandsworth Bridge Road, London SW6 2TF
Registered in England No. 5097508 VAT No. GB 839 5267 87

